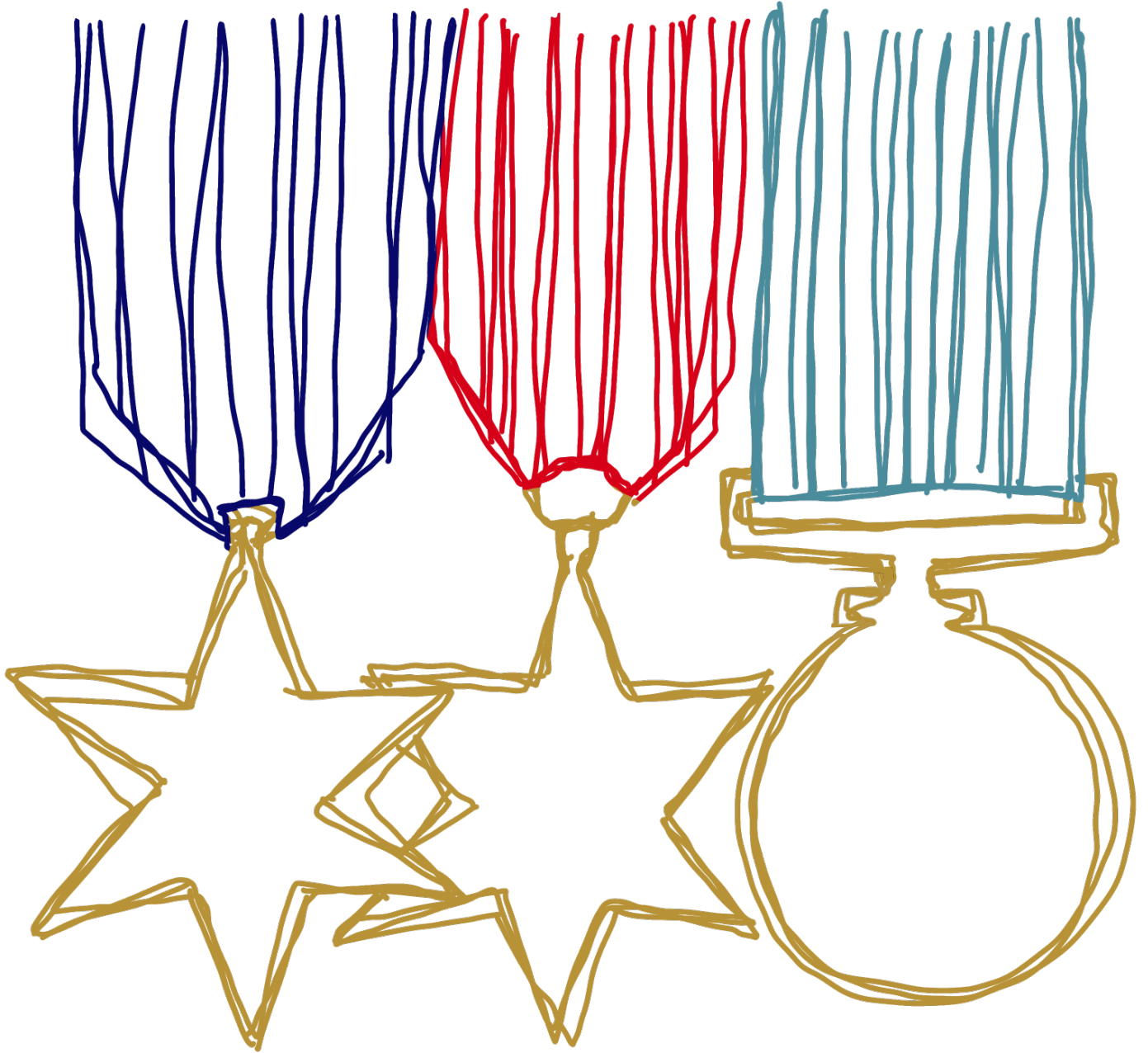


BROUGHTON HOUSE VETERAN CARE VILLAGE

— 1916 ONWARDS —

WE CARE FOR THOSE WHO SERVED US



ACTIVITY BOOK



www.broughtonhouse.com

REGISTERED CHARITY NUMBER 1155225

ABOUT US

Established in 1916 to provide treatment to the thousands of Soldiers and Sailors returning from WWI, Broughton House has since evolved into a dedicated Charity and Nursing Home for Veterans and their partners.

Originally known as East Lancashire's Home for Injured Soldiers and Sailors, it was one of 5 pioneering Homes built across the North West of England. This drive and passion for Veteran Care is as strong today as it was in 1916.

After 100 years it is time for change and modernisation, ensuring we keep up to date with advances in medical care and provide the best possible living accommodation for our wonderful Residents.

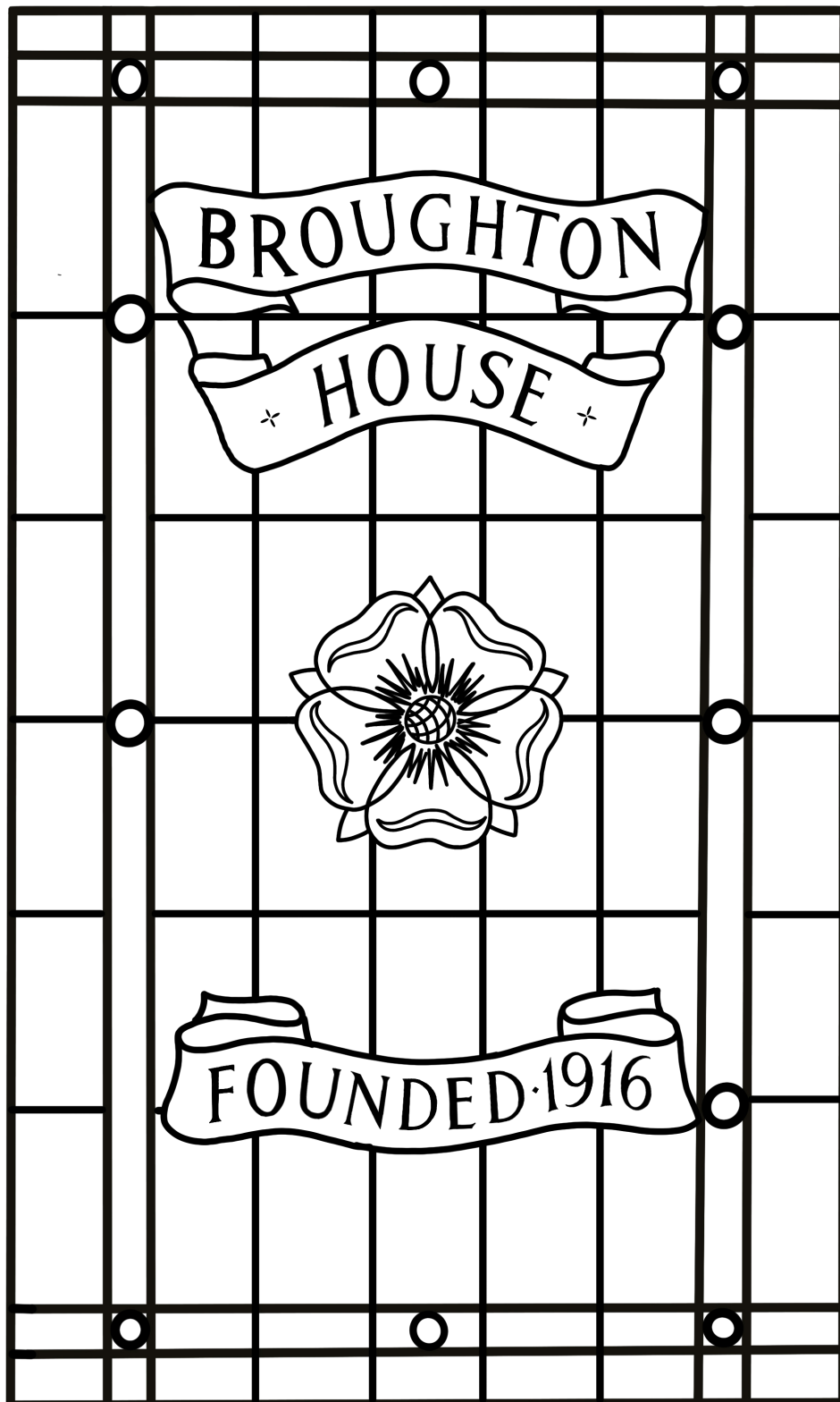
To enable a sustainable future and to become relevant to the entire Armed Forces Community, the Charity has embarked on the creation of the nation's first Veteran Care Village and it is our mission to ensure our Residents have the Home they truly deserve.



Freddie Flintoff MBE chatting with former Royal Marine Commando D-Day Veteran, George Simms (96)



STAINED IN HISTORY



DID YOU KNOW?

Colonel Sir William Coates founded Broughton House in 1916, since then we've delivered over 100 years of Veteran Care!

SEARCH AND DESTROY

U	W	V	E	Y	U	D	F	E	V	Y	B	M	I	A	Q	Z	D	F	B	M	E	A	S	U	N	I	T
V	S	D	T	F	O	P	L	A	S	D	V	G	T	Q	E	V	J	U	I	F	C	N	M	U	T	D	R
S	F	G	J	K	L	K	H	T	R	X	V	O	A	Q	R	G	B	T	U	A	T	F	L	R	S	Z	P
Z	A	D	G	H	K	Y	R	B	N	O	P	T	S	X	D	V	B	Y	T	L	U	R	Z	C	V	N	R
H	I	B	R	O	U	G	H	T	O	N	H	O	U	S	E	D	A	N	D	K	F	T	Y	U	A	E	O
D	E	F	G	U	N	O	P	A	R	A	Y	F	R	B	N	F	M	A	E	L	T	X	Z	Q	O	J	I
F	T	G	T	R	E	S	A	P	O	T	Y	A	O	G	I	V	U	B	G	A	E	C	P	A	T	G	R
I	R	Y	B	V	W	A	X	Q	O	P	K	Y	B	Y	U	S	D	A	S	N	L	P	G	F	A	T	A
D	E	F	Y	Y	H	B	N	I	M	O	P	D	R	C	A	U	E	Z	Y	D	B	M	R	L	I	P	M
S	W	M	Q	X	Y	H	R	O	Q	L	K	P	B	R	E	N	B	N	T	S	I	A	F	B	E	X	N
E	R	N	B	Y	D	C	E	R	F	Y	V	U	I	A	D	M	Y	P	W	A	Y	B	C	R	E	H	J
A	C	T	U	N	I	L	O	D	P	E	R	Y	M	W	D	R	T	F	A	E	C	V	B	N	U	Y	A
Y	Y	G	F	G	G	T	O	N	Y	O	F	R	I	I	A	Q	O	C	B	X	Q	E	K	E	S	O	H
T	R	B	C	H	E	U	O	Y	U	P	R	A	L	E	Y	D	N	R	V	U	Y	D	R	U	W	P	O
H	F	D	G	U	A	B	R	F	J	E	C	R	I	X	F	B	P	Y	Y	T	N	Y	O	I	X	W	R
U	V	R	T	J	V	F	T	E	N	D	M	O	T	R	O	O	P	H	N	R	L	H	Y	B	Y	X	T
N	N	F	E	K	U	E	A	D	K	F	H	S	A	Q	O	O	U	L	I	W	E	V	A	Y	K	T	R
I	A	P	A	N	K	Q	R	C	I	G	K	W	R	D	A	L	A	S	P	A	R	C	L	E	O	V	V
W	E	I	P	M	N	D	A	C	A	E	B	Y	Y	N	F	N	Q	M	I	O	E	A	N	X	U	S	A
R	Y	K	U	W	C	V	P	H	L	N	E	F	Y	I	M	R	W	A	E	T	C	U	A	P	A	B	N
F	U	I	L	C	D	G	E	I	E	H	Y	N	R	N	L	S	Z	E	O	C	Y	P	V	Y	N	M	S
Y	I	U	C	O	K	N	G	O	A	Y	I	M	O	U	O	C	T	O	N	X	H	H	Y	N	H	Y	E
A	N	R	N	N	O	U	X	A	E	F	E	V	E	T	E	R	A	N	U	A	E	I	S	P	D	N	N
Y	H	A	V	S	A	M	V	W	C	V	T	U	M	R	L	A	F	Y	A	D	S	E	A	M	A	K	I
U	G	E	W	C	Q	J	C	E	Y	U	A	L	J	X	K	W	G	B	D	B	F	R	W	Z	T	P	R
P	R	C	A	R	X	K	H	Q	U	Q	D	C	N	L	R	E	J	O	F	P	C	V	B	F	B	O	A
E	W	B	D	I	T	E	Y	L	P	Z	C	A	V	O	L	Q	L	E	B	O	Y	L	L	W	N	L	M
F	S	L	E	P	H	D	J	P	I	A	E	N	C	P	I	C	M	A	Y	T	I	U	E	Q	M	A	L
V	Q	P	I	T	B	C	L	N	L	Y	L	F	S	Q	J	T	N	H	H	E	L	O	V	A	O	P	A
I	U	G	B	I	N	B	O	F	J	P	P	R	A	M	U	B	R	M	Q	D	B	A	Y	X	B	L	Y
O	A	T	G	O	L	Y	S	X	N	L	E	C	Z	I	H	E	U	I	Z	R	A	F	U	E	J	S	O
P	D	M	T	N	K	T	A	D	I	W	J	V	W	X	V	H	E	R	T	D	T	P	P	F	H	T	R
A	R	G	E	D	F	I	P	V	L	G	P	N	E	R	S	Y	W	R	B	G	T	F	O	Y	P	C	E
Z	O	Y	S	E	S	K	O	H	S	G	U	Y	P	E	W	Z	A	D	K	N	L	W	L	H	L	T	R
W	N	Q	Z	S	Z	O	L	Y	T	Y	L	N	U	S	E	A	Z	U	Z	I	E	N	U	T	D	L	F
Q	Y	A	F	H	Y	L	J	O	Y	R	I	Q	N	V	A	Y	Q	J	P	U	O	B	J	R	T	B	Y
M	R	Z	G	U	Q	P	Y	P	N	E	Y	Z	A	E	C	W	I	I	L	Q	A	Y	N	I	Y	A	P
I	Q	J	P	X	E	G	F	A	I	B	T	L	C	B	R	O	R	P	X	A	Z	R	S	A	D	U	L
O	R	I	L	C	R	S	V	Q	M	N	E	B	E	U	B	L	P	E	E	N	N	E	F	X	T	B	O
L	F	B	O	O	T	S	N	O	D	A	R	T	R	I	P	M	F	A	D	E	C	O	D	E	B	I	I
P	T	Y	K	N	G	V	M	L	B	Z	I	C	Z	M	J	N	E	C	N	E	M	L	Q	E	A	O	N
Y	B	T	M	O	J	B	D	R	P	I	F	S	Q	G	A	R	A	G	Y	H	O	K	Z	Q	Z	F	B
U	V	E	U	S	B	N	S	D	O	L	T	A	C	B	E	F	H	U	U	A	P	B	A	O	C	R	W
N	P	I	N	H	C	Y	C	A	E	P	I	C	B	Q	K	B	A	I	K	C	L	D	T	L	O	B	A
G	A	O	B	Y	R	U	V	Z	A	E	P	M	N	A	I	Y	P	N	F	R	K	I	C	P	M	M	D
T	X	U	W	M	E	K	R	X	U	I	S	N	I	D	U	U	Y	G	E	T	R	U	E	K	B	W	C
R	C	G	A	D	O	M	W	B	I	O	A	G	U	S	B	O	R	W	S	U	G	Z	X	H	A	A	E
E	B	P	O	K	I	B	A	N	L	A	W	R	H	I	T	I	I	Q	C	J	Y	A	N	G	T	N	V
C	Y	C	S	O	T	F	Q	M	E	W	R	O	T	O	D	R	N	B	P	P	J	Q	H	B	F	I	B
B	E	L	C	E	D	D	X	U	F	C	Y	F	R	I	I	E	W	E	B	R	D	E	K	Y	E	O	H
D	T	E	B	R	W	L	C	I	Y	H	F	W	A	O	I	F	I	R	A	W	A	Y	M	T	I	E	Y
A	R	R	G	V	A	N	V	L	U	N	U	C	H	A	R	L	I	E	F	O	X	M	A	E	S	T	T
E	T	Y	B	C	R	U	M	D	P	T	A	D	E	Q	P	S	N	T	K	O	F	A	Y	I	V	E	R
E	R	V	B	T	R	L	I	E	B	O	U	N	R	M	U	K	E	L	F	I	E	F	G	A	W	Q	U

**BROUGHTONHOUSE
UNIT**

FALKLANDS

DDAY

ARMY

PARATROOPER

ROYALNAVY

VETERAN

ROYALMARINES

SQUADRON

CONSCRIPTION

RAF

GUNNER

DECODE

BERET

SPITFIRE

CHARLIEFOX

FLAG

BOOTS

COMBAT

VULCAN

TROOP

MILITARY

BATTLE

DID YOU KNOW?

Residents were visited
by Hollywood Actress
Gracie Fields in 1934
and again in 1943.

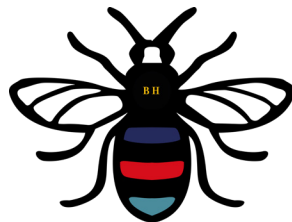


WORDS FOR THOUGHT

The Soldier By Rupert Brooke

If I should die, think only this of me:
That there's some corner of a foreign field
That is for ever England. There shall be
In that rich earth a richer dust concealed;
A dust whom England bore, shaped, made aware,
Gave, once, her flowers to love, her ways to roam;
A body of England's, breathing English air,
Washed by the rivers, blest by suns of home.

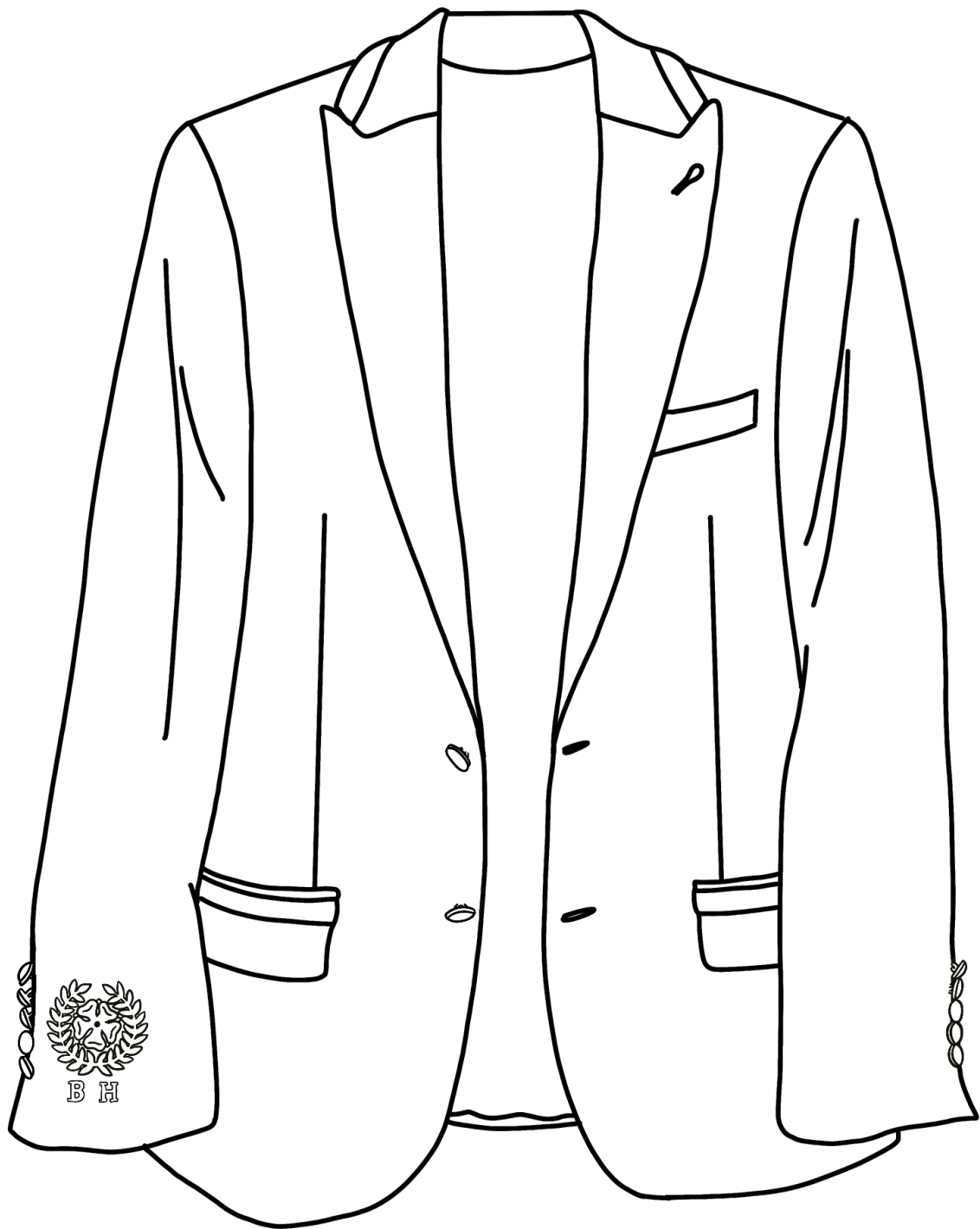
And think, this heart, all evil shed away,
A pulse in the eternal mind, no less
Gives somewhere back the thoughts by England given;
Her sights and sounds; dreams happy as her day;
And laughter, learnt of friends; and gentleness,
In hearts at peace, under an English heaven.



DID YOU KNOW?

Broughton House was originally established to provide treatment to thousands of Soldiers and Sailors injured during WWI, with a hospital and operating theatre under the living quarters.

LOOK THE PART

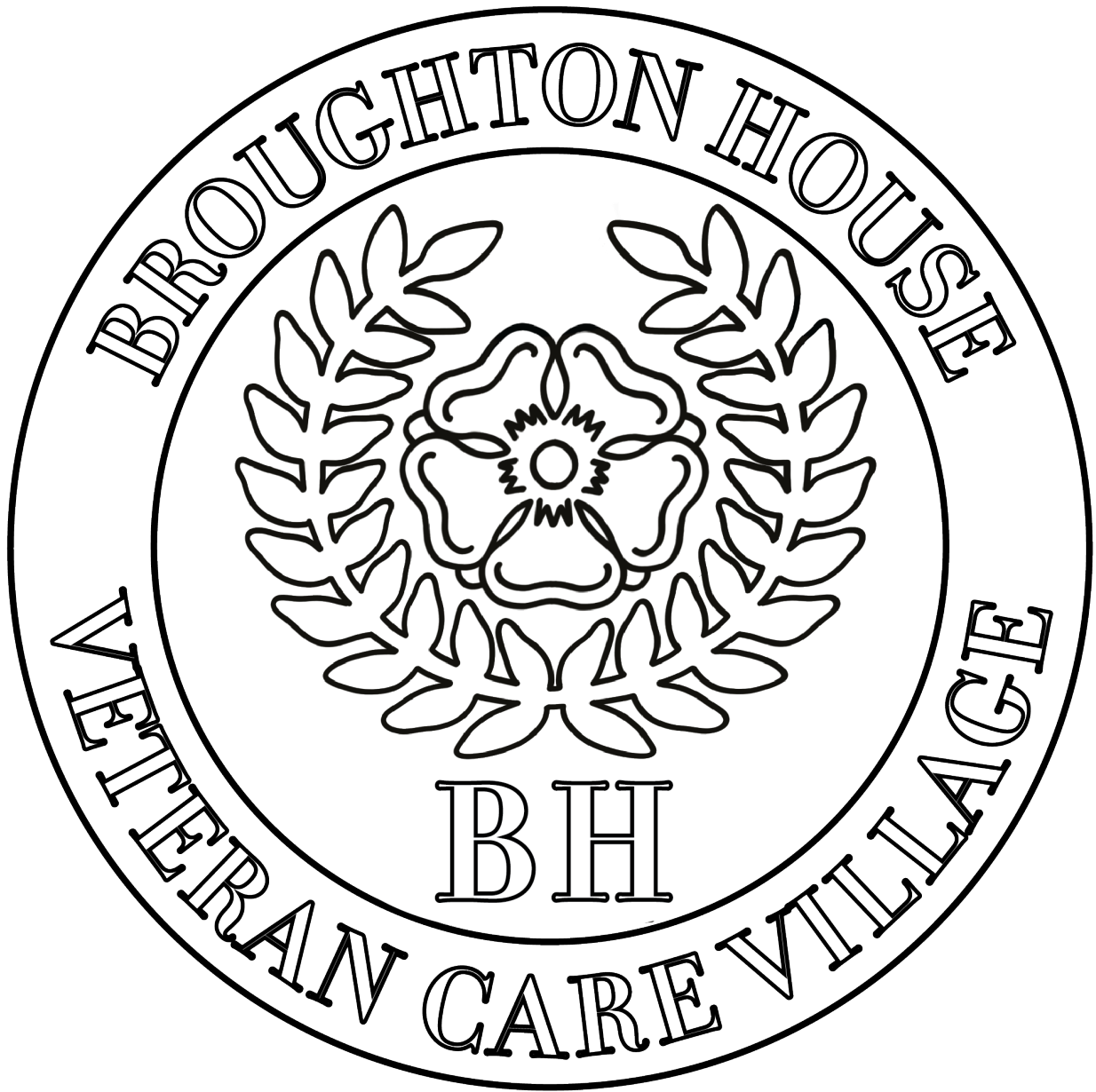


DID YOU KNOW?

Broughton House Blazers were designed by the N Brown Group and presented to our Residents by Freddie Flintoff MBE in 2018.



CHALLENGE COIN



DID YOU KNOW?

The oldest Resident at Broughton House lived to be 100 years old!

LIFE IS A SONG

‘We’ll Meet Again’

by Dame Vera Lynn

We'll meet again
Don't know where, don't know when
But I know we'll meet again some sunny day
Keep smiling through
Just like you always do
'Til the blue skies drive the dark clouds far away

So will you please say "Hello" to the folks that I know
Tell them I won't be long
They'll be happy to know that as you saw me go
I was singing this song

We'll meet again
Don't know where, don't know when
But I know we'll meet again some sunny day

We'll meet again
Don't know where, don't know when
But I know we'll meet again some sunny day
Keep smiling through
Just like you always do
'Til the blue skies drive the dark clouds far away

So will you please say "Hello" to the folks that I know
Tell them I won't be long
They'll be happy to know that as you saw me go
I was singin' this song

We'll meet again
Don't know where, don't know when
But I know we'll meet again some sunny day

DID YOU KNOW?

During WWII Broughton House acted as a station for carrier pigeons.



DECODE THIS

9		6		1	3			8
	5	8					9	
	3						1	
	6		8			9	2	
		3	4		9	1		
	4	9			6		3	
	9						8	
	1					6	7	
4			9	6		3		1

DID YOU KNOW?

The Broughton House Veteran Care Village will be the first of its kind in the UK.

QUEST FOR ANSWERS

What is the most senior Regiment of the Foot Guards in the British Army?

Which two words are written on a Victoria Cross medal?

In what year was National Service abolished?

What branches make up the British Armed Forces?

Who is the Commander-In-Chief of the British Armed Forces?

When did a standing British Army form?

What iconic Supermarine Aircraft took part in the Battle of Britain?

In which conflict did the Battle of the Somme take place?

During the 1991 Gulf War the main battle tank of the British Army was?

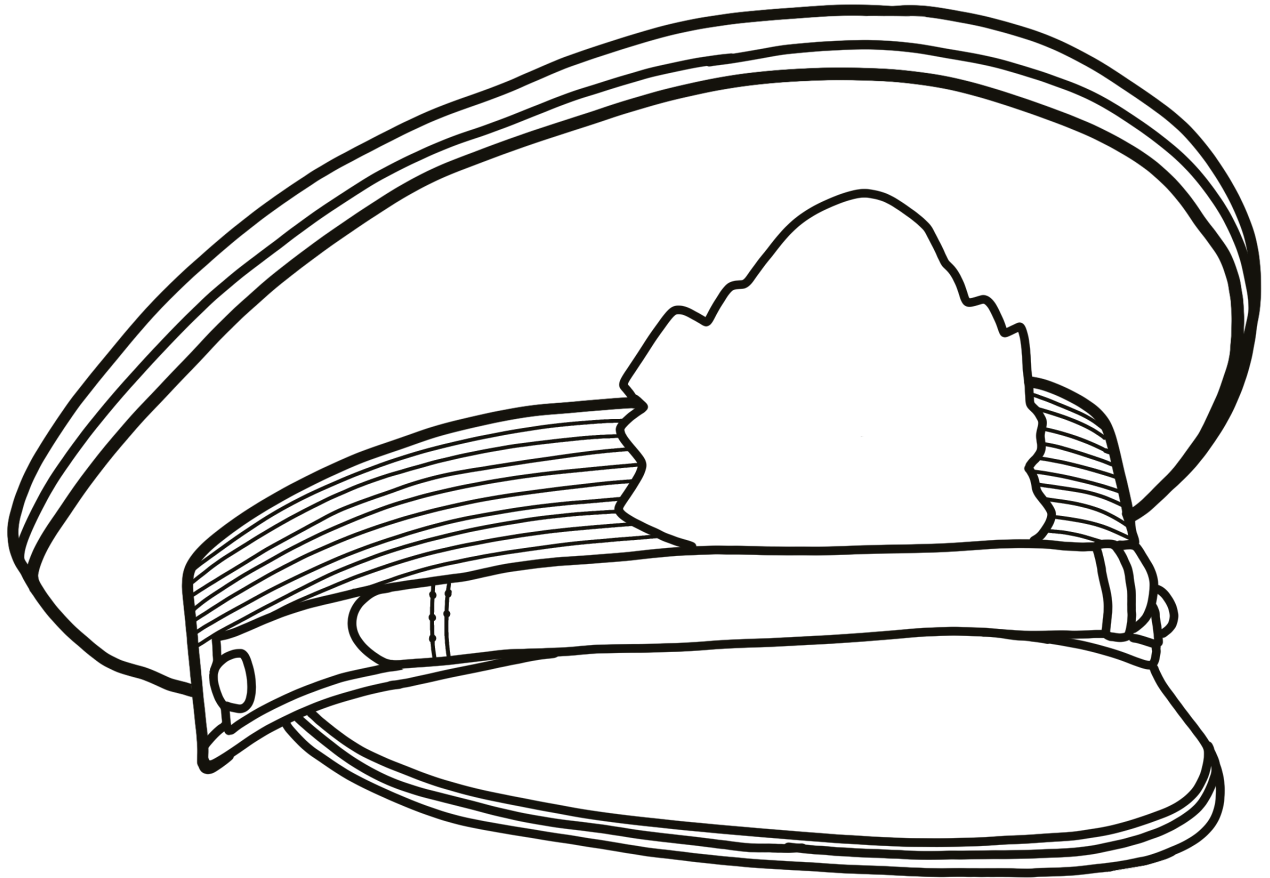
The last Monarch to die in combat was?

DID YOU KNOW?

Since 1916 Broughton House has cared for over 8,000 Veterans.



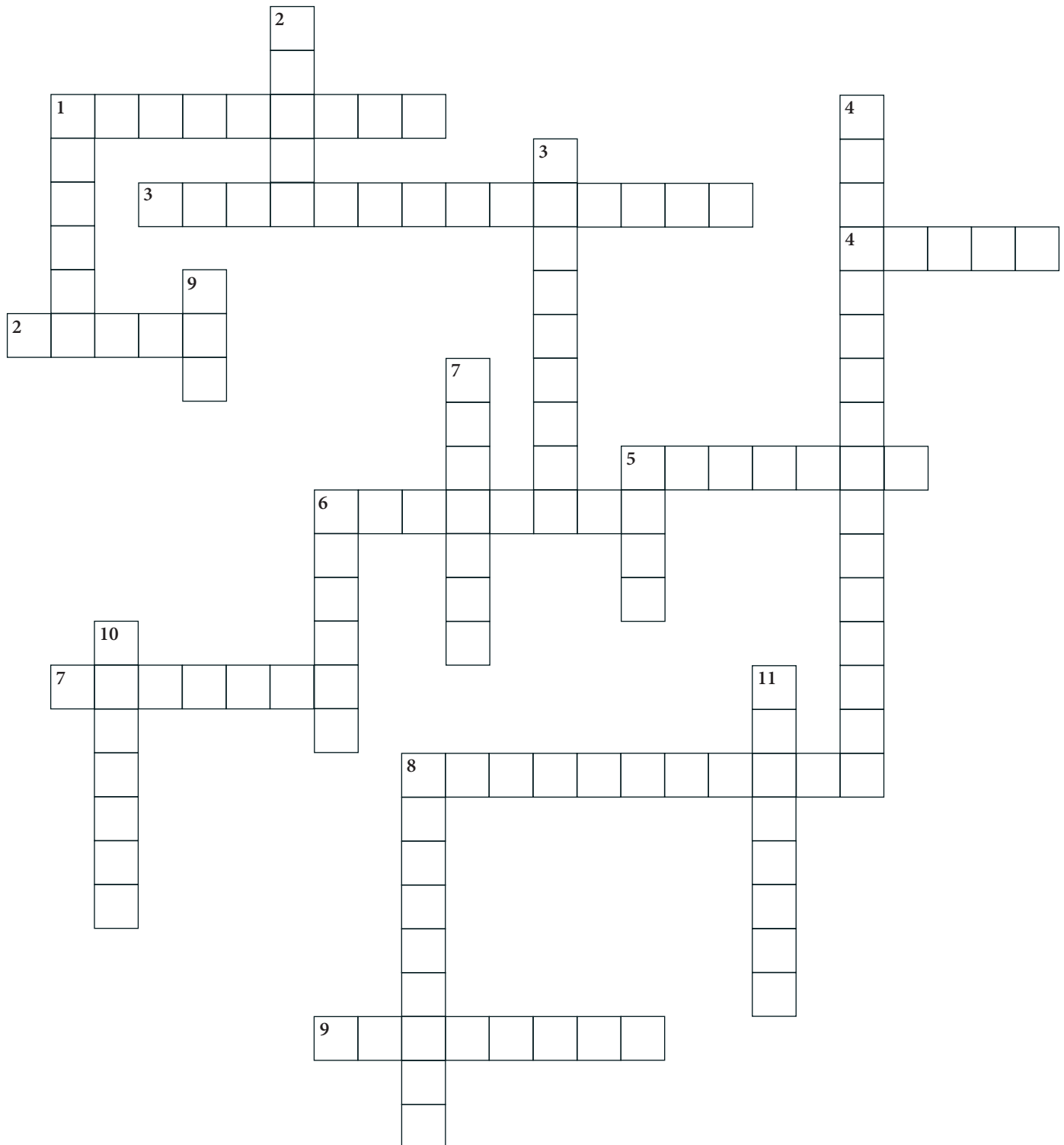
DOFF YOUR CAP



DID YOU KNOW?

Famous Scottish Comedian Harry Lauder visited Broughton House during the First World War.

CODE BREAKER



DID YOU KNOW?

Broughton House welcomed its first Resident, Charlie Fox, in May 1917.



CODE BREAKER: CLUES

Across

1. What song became a popular marching song for soldiers during the First World War? It's a Long Way To...
2. What is the traditional colour of Army Uniform?
3. The Assassination of which Austrian Archduke sparked a chain of events which ultimately led to the First World War?
4. How many sheets of toilet roll were each British Soldier fighting in World War Two allowed per day?
5. What was the first name of the British Prime Minister at the time of World War Two? Churchill?
6. Which military medal, that also shares it's name with an English Queen, was awarded 182 times to soldiers for action in World War Two?Cross
7. What popular breakfast and dessert spread was invented because of rationing during World War Two?
8. What nickname was given to the British women who worked in munitions manufacturing TNT shells during the First World War?
9. On Christmas Day 1914 there was an official ceasefire along parts of the Western Front, what game did the soldiers play?

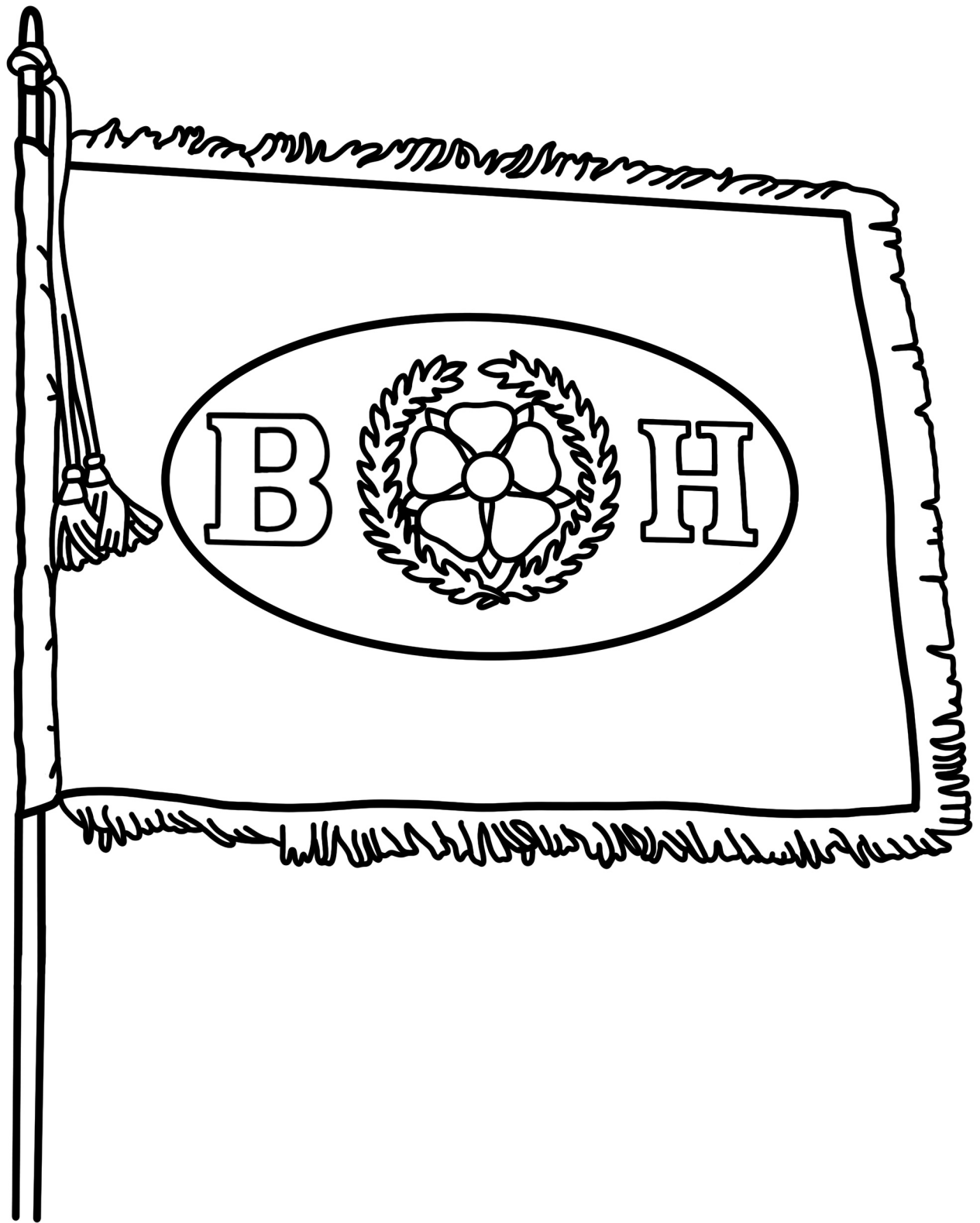
Down

1. A long, narrow ditch?
2. Royal Navy and Royal Marine slang for food?
3. The Lord who featured on recruitment posters for World War One?
4. What modern Special Forces emerged during World War Two?
5. What was the acronym for females in the RAF in World War One?
6. What day marks the end of World War Two in Europe?
7. The codename for D-Day? Operation...?
8. What was the name of the Royal Navy submarine that sunk the Argentine Ship ARA General Belgarano during the Falklands War? HMS...
9. Slang for an exaggerated story?
10. What War was nicknamed Operation Desert Shield?
11. Which British singer is famous for the Wartime classis '*We'll Meet Again*'? Dame...?

DID YOU KNOW?

There was a brief ban on alcohol at Broughton House when family members would come in and get the Residents drunk.

FLY THE FLAG

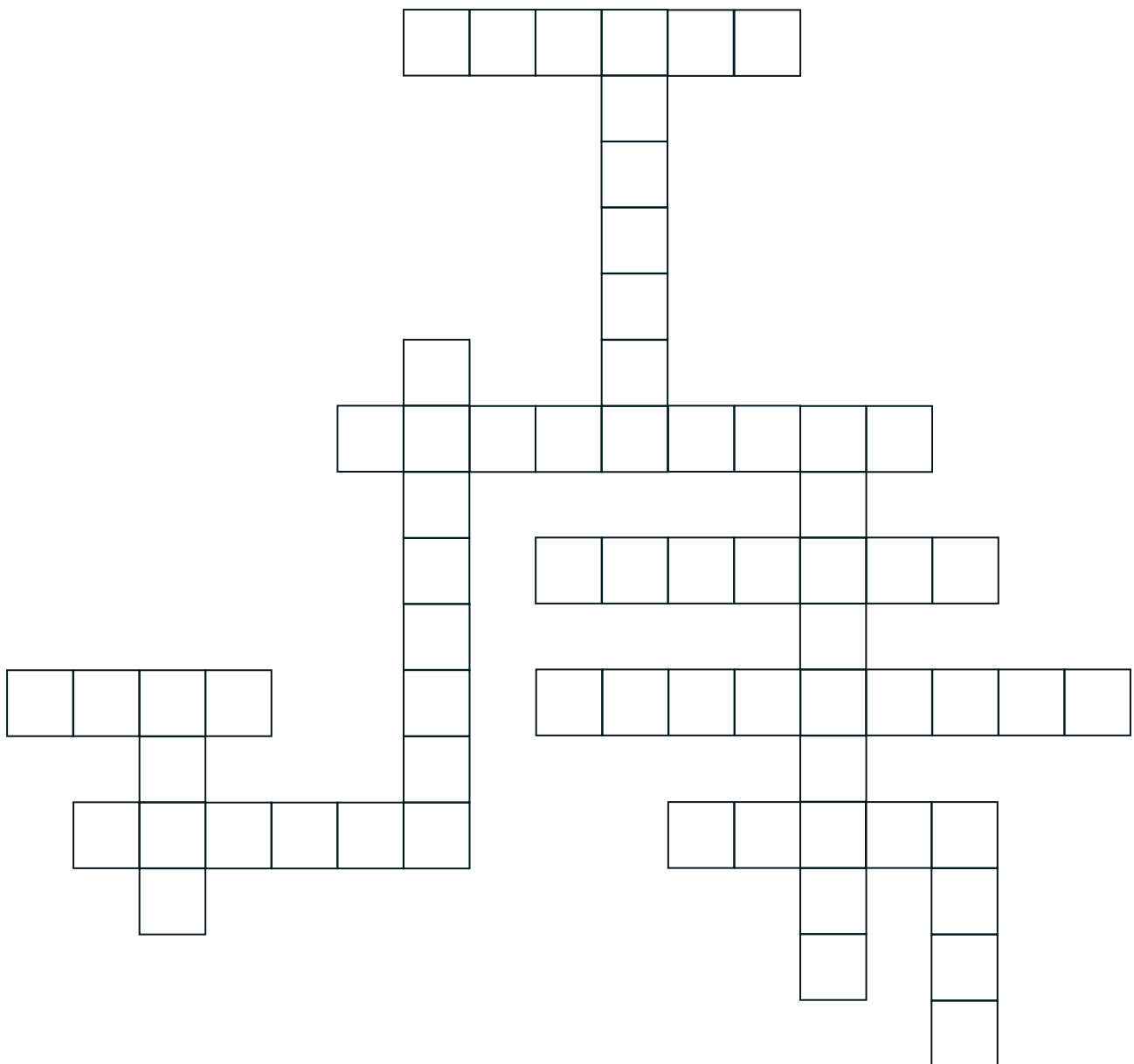


DID YOU KNOW?

The Broughton House Armed Forces Support Hub supports all Military Veterans and their families in life after Service.



MILITARY LINGO



Words To Fit

BANGSTICK	CHINSTRAP	CHUM
FULLSCREW	GEORGE	GIGS
JACK	PULPIT	REDDERS
SPROG	TINFISH	WARPAINT

DID YOU KNOW?

Artefacts in our Museum have been kindly donated by our previous Residents and the local community of Greater Manchester and the North West.

A COLOURFUL LIFE

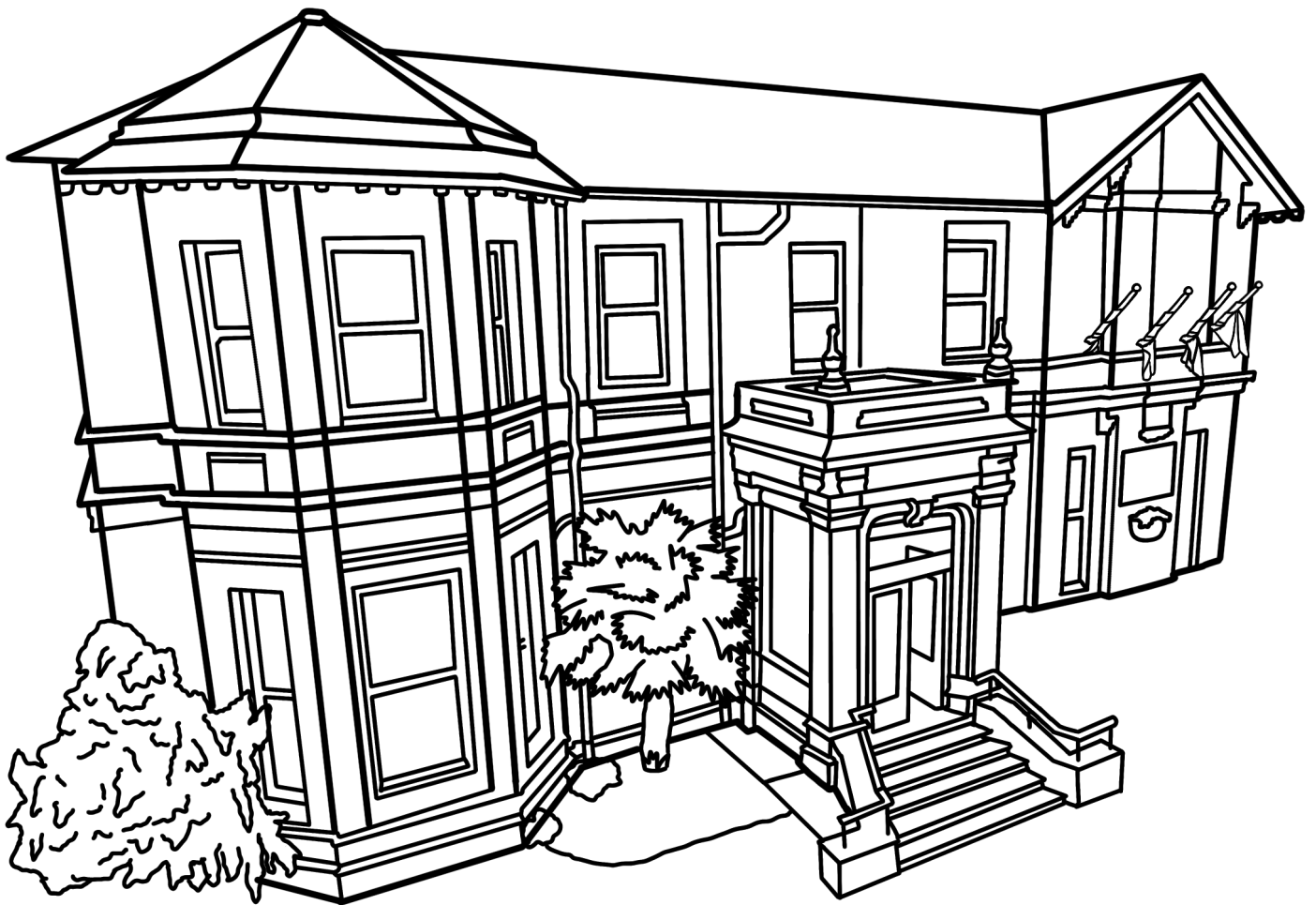


DID YOU KNOW?

Our famous stained glass windows were installed in the 1980's.



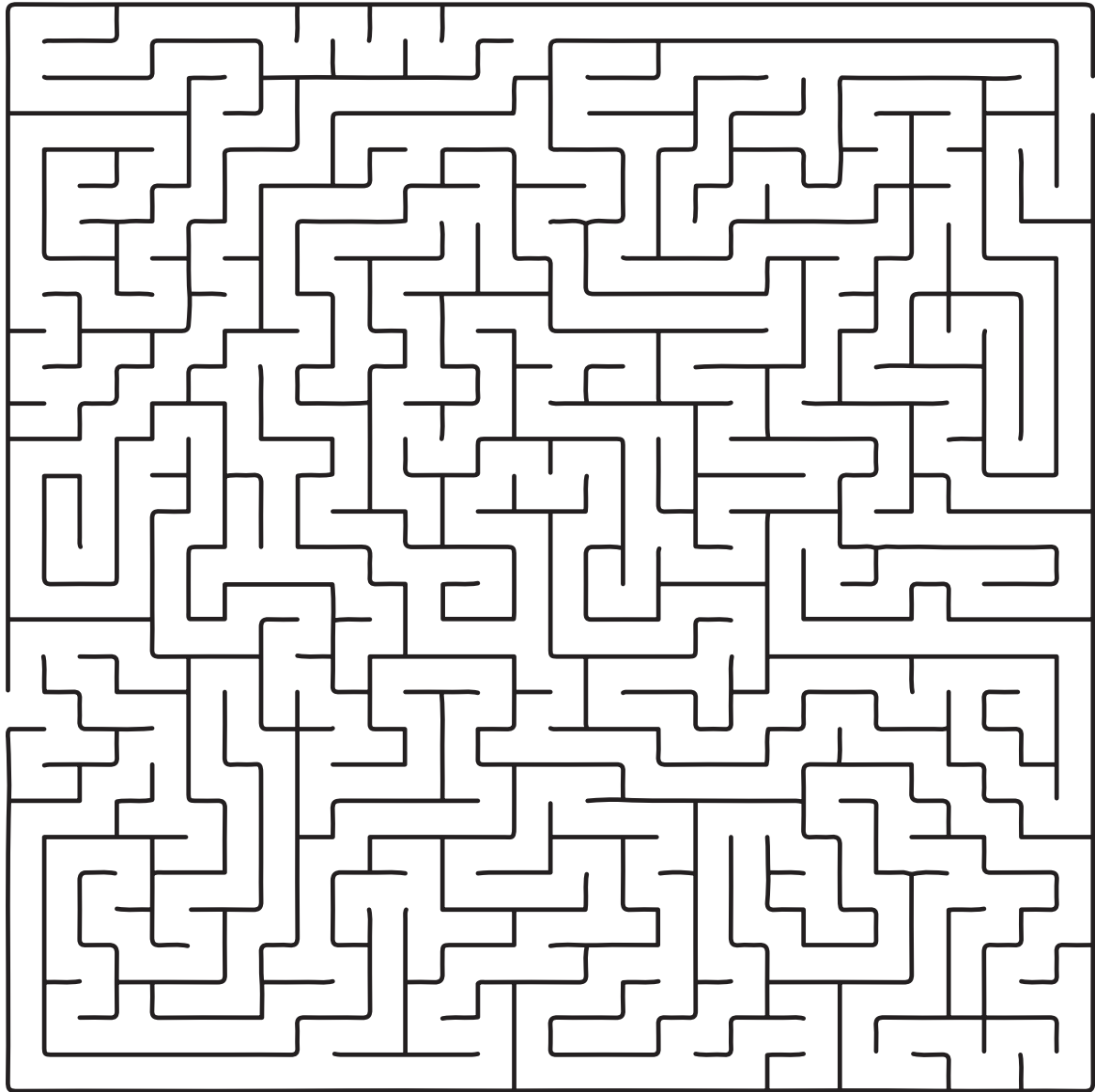
OLD FRIEND



DID YOU KNOW?

Our longest standing CEO was Colonel Donald Gibbs CBE DL JP who was in post for over 30 years (1977 – 2008).

ESCAPE TO VICTORY



DID YOU KNOW?

Broughton House was formerly known as the East Lancashire Home For Sailors and Soldiers.

CRACK THE CODE

A	B	C	D	E	F	G	H	I	J	K	L	M	N	O	P
														5	

Q	R	S	T	U	V	W	X	Y	Z
						7			

7	11	20	9	3	5	1	10	5	11	5	18	20
W					o			o		o		

12	20	24	24	12	11	20	18	5	2	1	8
								o			

13	9	22	8	13	3	2	5	6	3	5	1	6
							o			o		

12	5	18	5	6	6	5	7	7	20	10	13	4	20
	o		o			o	W	W					

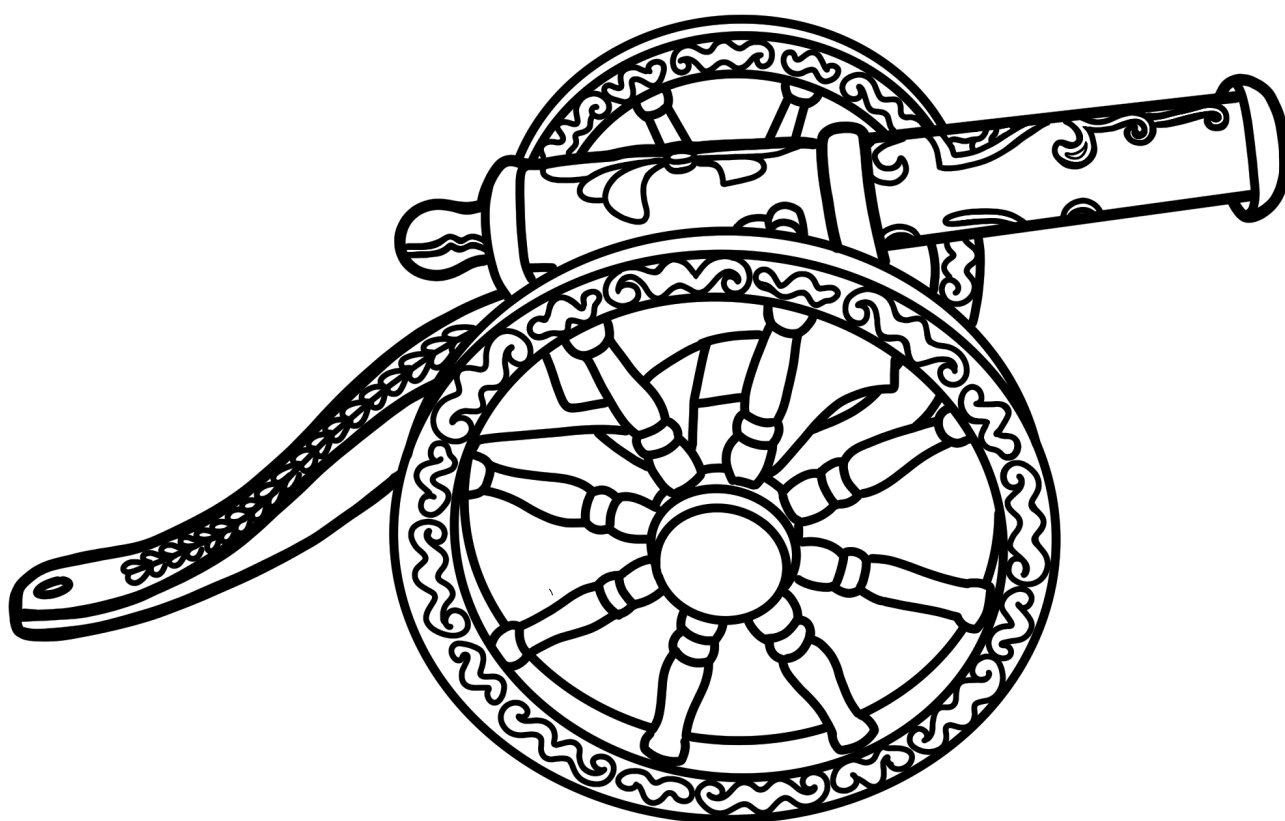
5	1	6	12	5	22	13	3
o				o			.

DID YOU KNOW?

Broughton House is the only Care Home in the North West delivering dedicated Veteran Care.



TANKS IN ADVANCE



DID YOU KNOW?

Admiral Viscount John Jellicoe officially opened Broughton House on 31st October 1918.

A PIECE OF HISTORY

BROUGHTON HOUSE VETERAN CARE VILLAGE

1916 ONWARDS

BUY A BRICK CAMPAIGN

A Son, a Brother, Father, Husband, Friend, a Comrade in Arms.

He is, simply, my Grandad.

And on a table in his room he has a brick.

It's a Broughton brick.

I looked at him, he smiled picked it up

And handed it to me. On it was a small piece of paper.

In his hand writing it said;

"Care... Past, Present and Future.

Let it speak to you. Let it speak."

I held it close and could feel its warmth,

The warmth of Past and Present Care.

I could hear the air raid sirens, it had known laughter and tears

The sound of marching boots

And the cry of new born babies.

The brick had known Care

And dignity and laughter of my Grandad's world.

Today it knows the Care

Of the Cooks, Cleaners and Carers

The Broughton Comrades

Who have been there down the years.

The brick spoke to me

"And the care of their futures is in your hands."

I smiled.

Grandad smiled

And I even think...

The Broughton brick smiled as well.

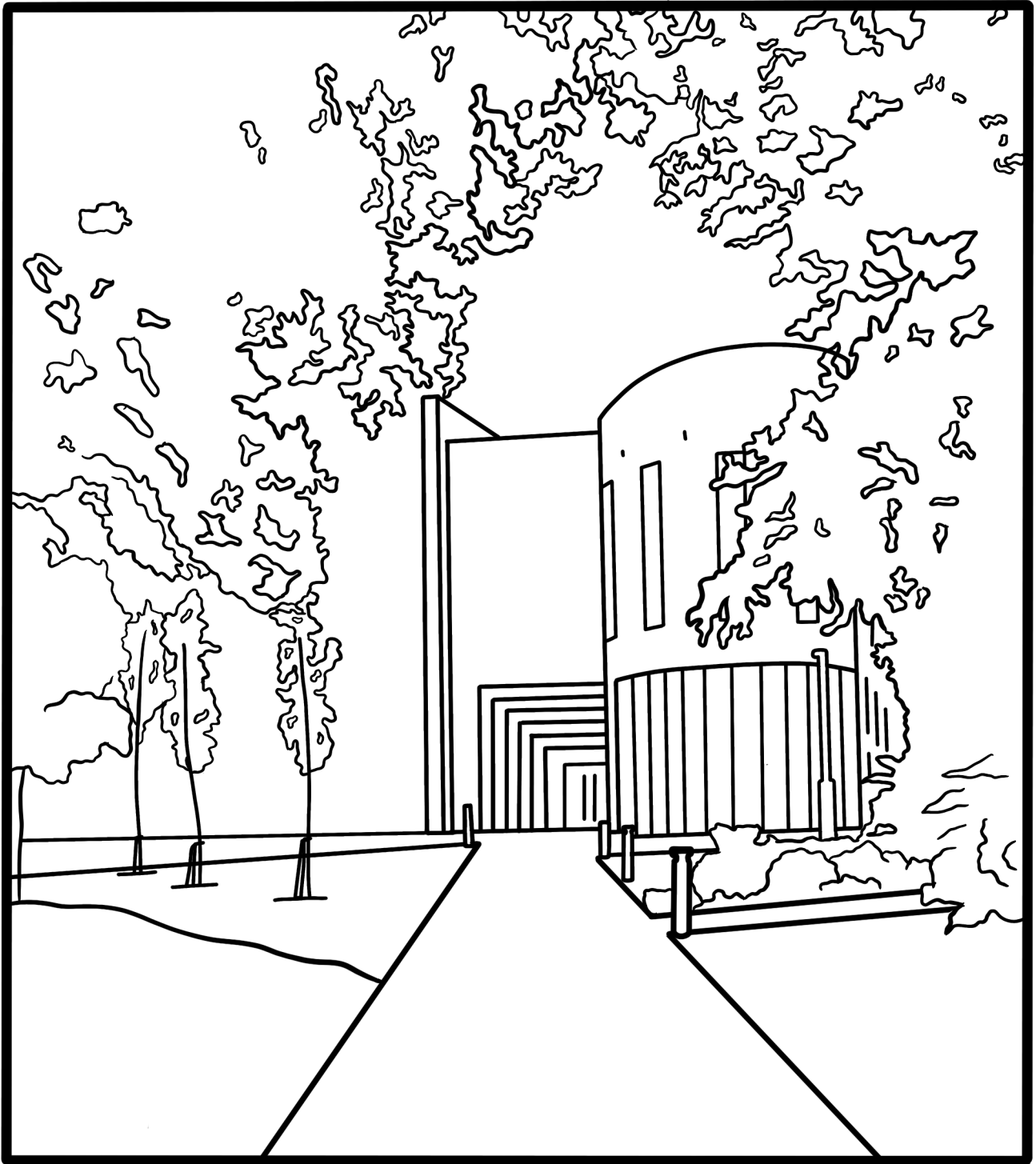
Brian Simms

DID YOU KNOW?

Broughton House launched its 'Buy a Brick' Campaign in February 2020 raising £10,000 in the first month.



NEW BEGINNINGS



DID YOU KNOW?

Broughton House is home to its very own original Old Bill drawing by famous cartoonist Captain Bruce Bairnsfather.

BUY A BRICK CAMPAIGN

BROUGHTON HOUSE VETERAN CARE VILLAGE

— 1916 ONWARDS —

BUY A BRICK CAMPAIGN



We are proud to announce the launch of the Broughton House – Veteran Care Village ‘Buy a Brick Campaign’, which aims to raise £500,000 to assist in generating the remaining funds required to build the UK’s first Veteran Care Village.

The Campaign allows individuals, schools, community groups and companies to join

together in making a significant difference to the lives of our current and future Residents. Our different giving levels allow everyone to support. Whatever you can give, big or small, will make all the difference to the Veterans within our care.

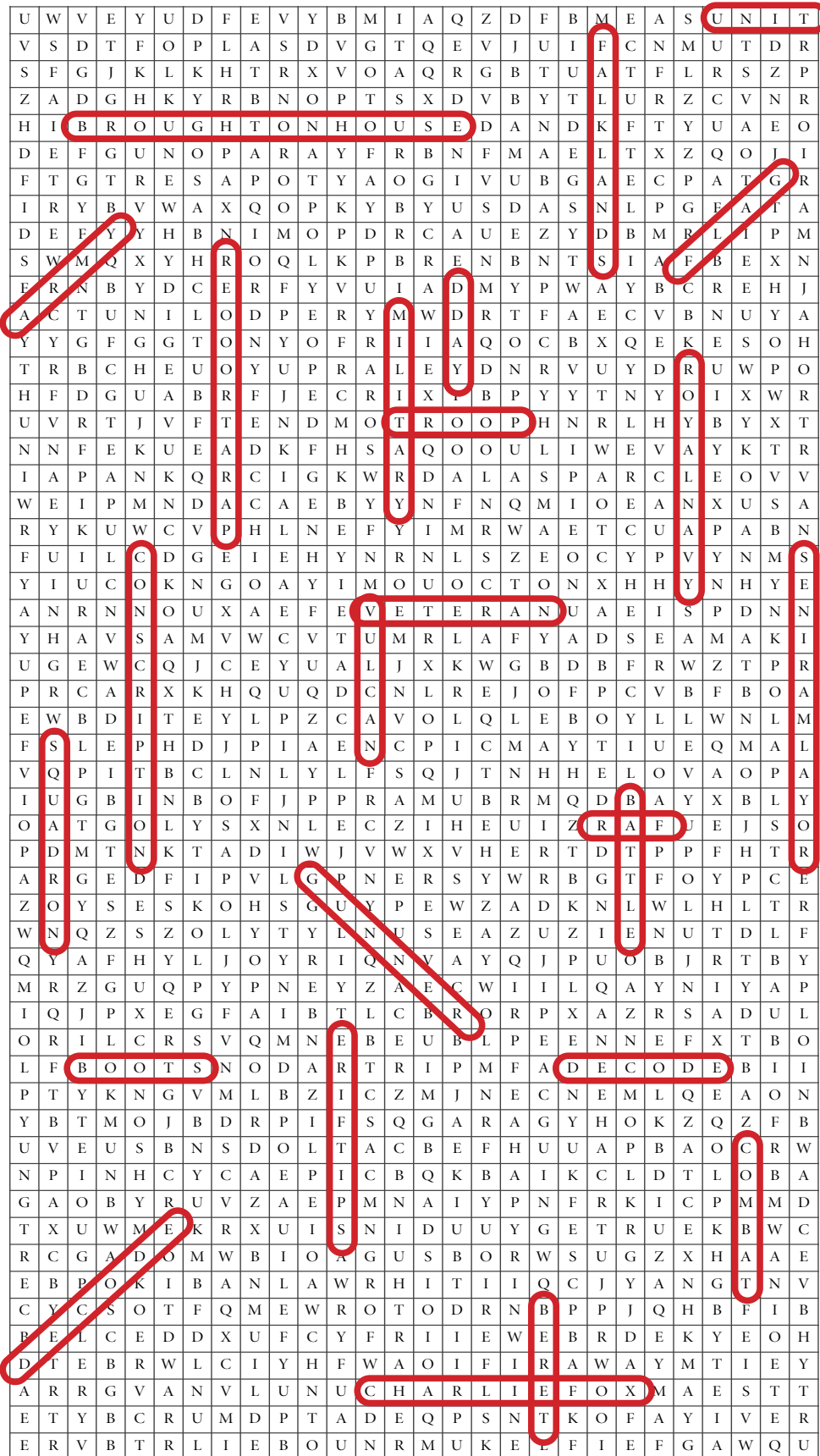
For further information please go to www.broughtonhouse.com/buy-a-brick

#HouseAVeteran



DRUM ROLL PLEASE...

SEARCH AND DESTROY / PAGE 4



DECODE THIS / PAGE 9

9	7	6	5	1	3	2	4	8
1	5	8	6	4	2	7	9	3
2	3	4	7	9	8	5	1	6
7	6	1	8	3	5	9	2	4
8	2	3	4	7	9	1	6	5
5	4	9	1	2	6	8	3	7
6	9	7	3	5	1	4	8	2
3	1	5	2	8	4	6	7	9
4	8	2	9	6	7	3	5	1

QUEST FOR ANSWERS / PAGE 10

What is the most senior Regiments of the Foot Guards in the British Army? **The Grenadier Guards**

Which two words are written on a Victoria Cross medal? **For Valour**

In what year was National Service abolished? **1960**

What branches make up the British Armed Forces? **Royal Navy, Royal Marines, British Army and Royal Air Force**

Who is the Commander-In-Chief of the British Armed Forces? **Queen Elizabeth II**

When did a standing British Army form? **The 17th Century**

What iconic Supermarine Aircraft took part in the Battle of Britain? **Spitfire**

In which conflict did the Battle of the Somme take place? **First World War**

During the 1991 Gulf War the main battle tank of the British Army was? **Challenger I**

The last Monarch to die in combat was? **Richard III**



CODE BREAKER / PAGE 12

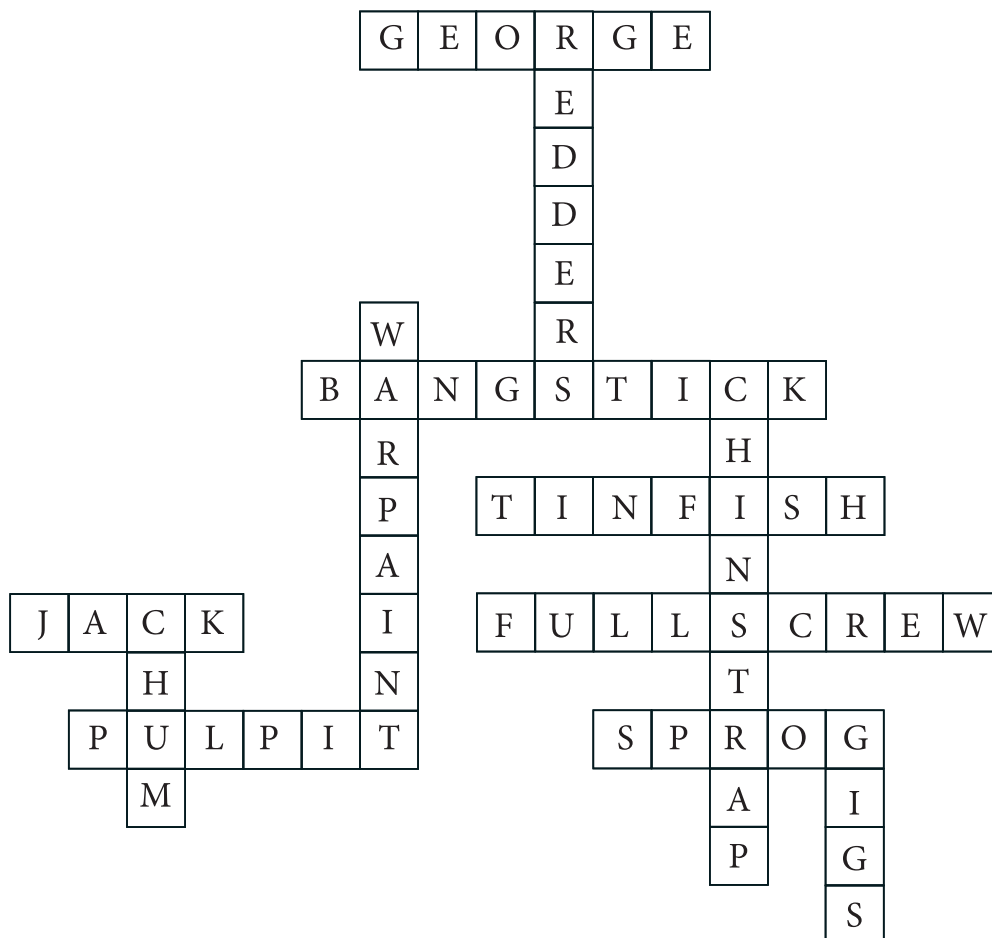
Across

1. Tipperary
2. Khaki
3. Franz Ferdinand
4. Three
5. Winston
6. Victoria
7. Nutella
8. Canary Girls
9. Football

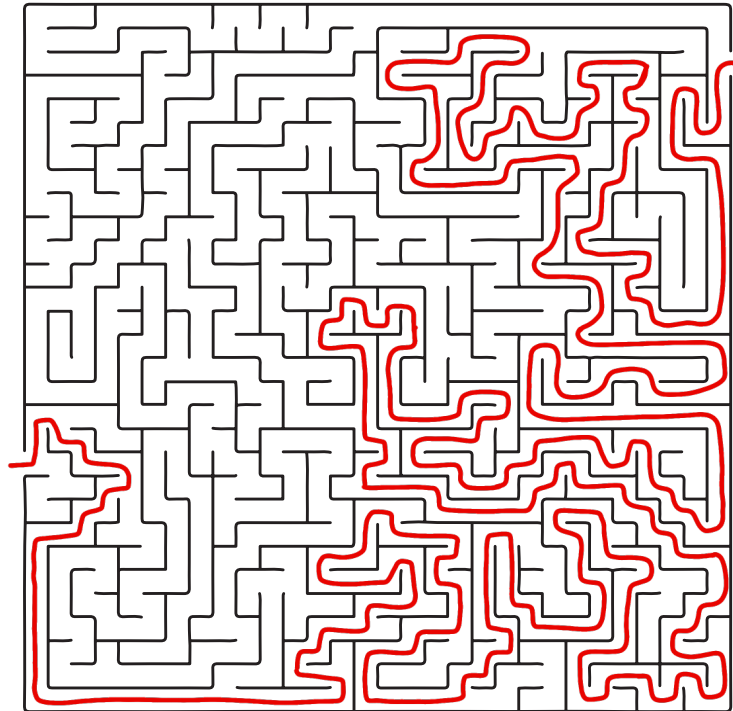
Down

1. Trench
2. Scran
3. Kitchener
4. British Commandos
5. WAAF
6. VE Day
7. Neptune
8. Conqueror
9. Dit
10. Gulf War
11. Vera Lynn

MILITARY LINGO / PAGE 15



ESCAPE TO VICTORY / PAGE 18



CRACK THE CODE / PAGE 19

A	B	C	D	E	F	G	H	I	J	K	L	M	N	O	P
13	/	/	22	20	2	10	11	/	/	/	24	18	9	5	/
Q	R	S	T	U	V	W	X	Y	Z						
/	6	8	12	1	4	7	/	3	/						

7	11	20	9	3	5	1	10	5	11	5	18	20	
W	h	e	n	y	o	u	g	o	h	o	m	e	
12	20	24	24	12	11	20	18	5	2	1	8		
t	e	l	l	t	h	e	m	o	f	u	s		
13	9	22	8	13	3	2	5	6	3	5	1	6	
a	n	d	s	a	y	f	o	r	y	o	u	r	
12	5	18	5	6	6	5	7	7	20	10	13	4	20
t	o	m	o	r	r	o	w	, w	e	g	a	v	e
5	1	6	12	5	22	13	3						
o	u	r	t	o	d	a	y						



WHEN YOU GO HOME
TELL THEM OF US
AND SAY-

FOR YOUR TOMORROW,
WE GAVE OUR TODAY

BROUGHTON HOUSE
VETERAN CARE VILLAGE
— 1916 ONWARDS —
WE CARE FOR THOSE WHO SERVED US

Park Lane, Salford. M7 4JD
0161 740 2737



www.broughtonhouse.com

THE CHARITY IS REGISTERED WITH THE CHARITY COMMISSION UNDER CHARITY NUMBER 1155225

